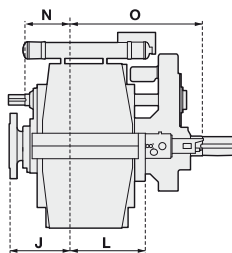
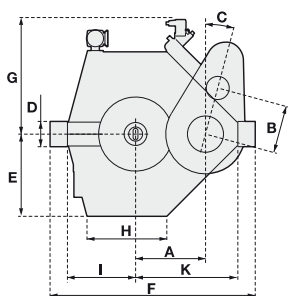
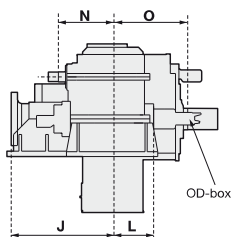
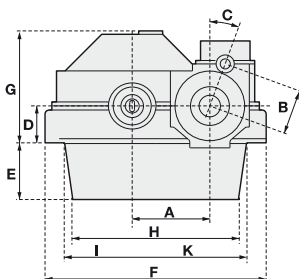


## HORIZONTAL OFFSET GEARS – DIMENSIONS

SH/SCH Size	A	B	C	D	E	F	G	H	I	J	K	L	N	O SCH/SH
SCH50	500	450	15	200	400	1350	600	880	450	470	820	400	380	1035
SCH56	560	470	15	200	400	1610	650	940	500	530	910	435	400	1045
SCH62	620	470	0	100	600	1980	820	1000	505	570	1005	680	445	1245
SCH68	680	510	0	100	700	2000	840	650	515	570	1095	730	500	1245
SCH75	750	530	15	280	885	2230	1220	865	735	660	1115	800	515	1670
SCH85	850	580	15	320	1000	2495	1440	970	830	730	1245	915	550	1800
SCH95	950	580	15	450	750	2710	1520	2250	830	1215	1420	540	700	1640
SCH105	1050	630	20	500	771	2995	1658	2195	910	1405	1545	560	750	1510/1700
SCH110	1100	670	20	500	810	3150	1850	2320	950	1450	1630	610	790	1750
SCH116	1160	670	20	550	850	3300	2240	2500	1015	1535	1715	725	830	1800/1100
SCH128	1280	740	20	590	1550	3640	1960	2675	1090	1600	1870		915	1915
SCH142	1420	820	20	620	1720	4040	2180	2970	1380	1700	2240		1015	2100



SH/SCH 75-85



SH/SCH 95-142