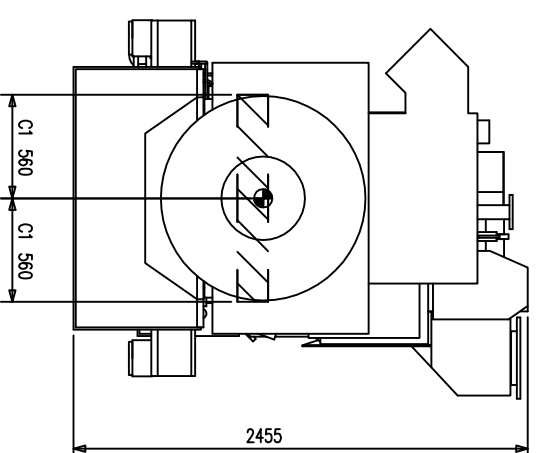
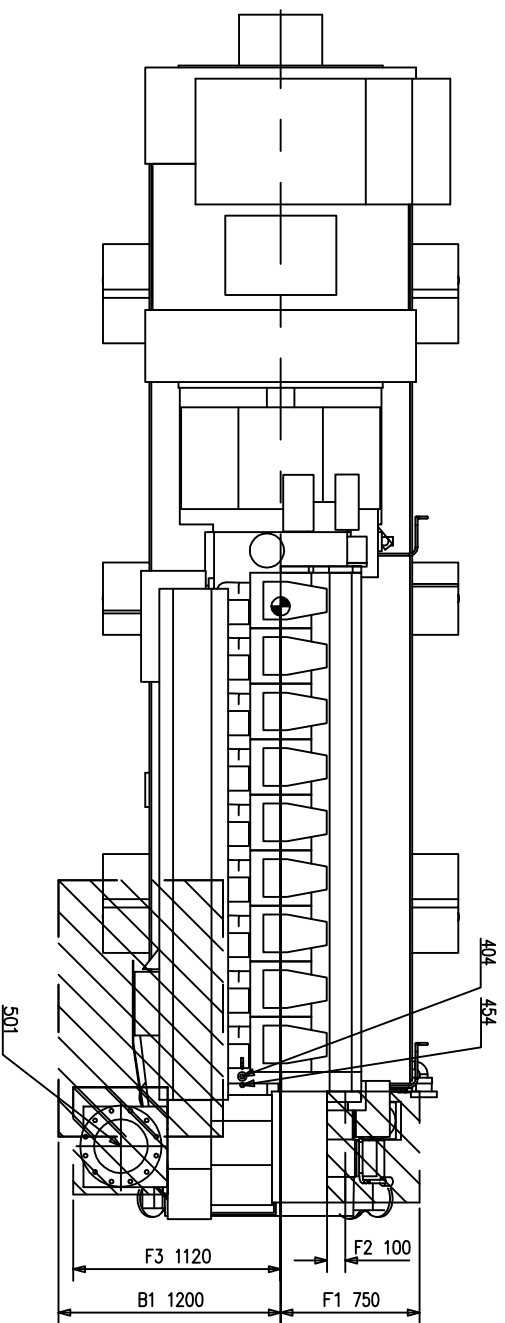
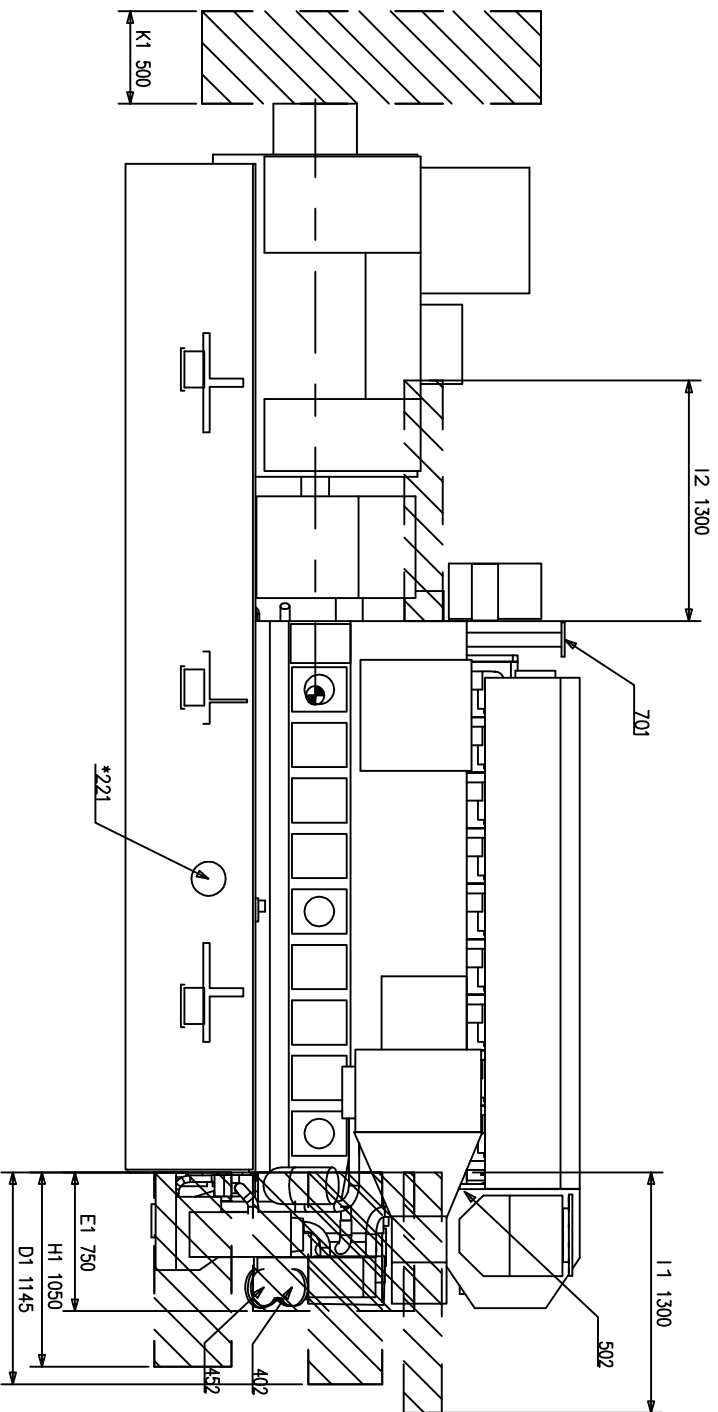


● CENTER OF GRAVITY  
\* = Optional

Paint: WEIGHTS (TOL. ±3%)  
DIESEL ENGINE (DRY WEIGHT) W9L20-AVK : 23900 kg

Code	Explanation
101	FUEL INLET
102	FUEL OUTLET
103	LEAK FUEL DRAIN, CLEAN FUEL
104	LEAK FUEL DRAIN, DIRTY FUEL
213	LUBE OIL FROM SEPARATOR AND FILLING
214	LUBE OIL TO SEPARATOR AND DRAIN
221	LUBE OIL OVER FLOW
301	STARTING AIR INLET
401	HT-WATER INLET
402	HT-WATER OUTLET
404	HT-WATER FROM PREHEATER TO HT CIRCUIT
406	HT-WATER AIR VENT
451	LT-WATER INLET
452	LT-WATER OUTLET
454	LT-WATER AIR VENT
501	EXHAUST GAS OUTLET
502	CLEANING WATER TO TURBINE
701	CRANKCASE AIRVENT



- A1. Height needed for overhauling piston and connecting rod: 1800mm
- A2. Height needed for transporting piston and connecting rod freely over adjacent cylinder head covers 2300mm
- A3. Height needed for transporting piston and connecting rod freely over exhaust gas insulation box 4L:2230mm 6L:2300mm, 8L & 9L:2400mm.
- B1. Width needed for dismantling charge air cooler and air inlet box sideways by using lifting tool 1200mm
- C1. Width needed for removing main bearing side screw 560mm
- D1. Distance needed to dismantle lube oil pump 1145mm

- E1. Distance needed to dismantle water box cover: 750mm
- F1. The recommended axial clearance for dismantling and assembly of silencers: 4L:590mm, 6L:650mm, 8L,9L:750mm
- F2. Minimum axial clearance is 100mm
- F3. Recommended distance for dismantling the gas outlet elbow: 4L:890mm, 6L:990mm, 8L,9L:1120mm.
- H1. Distance needed for dismantling lube plate cooler:1050mm
- I1. Distance needed for dismantling distance(free end): 4L:700mm,6L:1000mm, 8L, 9L:1300mm
12. Camshaft overhaul distance(flywheel end): 4L:700mm, 6L:1000mm,8L, 9L:1300mm
- K1. Service space for generator: 500mm

Product W9L2002-AUXPAC NAME 26.04.2007 W-SP OMS (P/N)		Wärtsilä Finland Oy Ship Power	
DIESEL ALTERNATOR SET AUXPAC 1740W9L20-AVK-50		DIESEL ALTERNATOR SET AUXPAC 1740W9L20-AVK-50	
UNIT NO. NO.	PART CLASS. -	UNIT NO. NO.	PART CLASS. -
SCALE 1:20 DATE 1/1		SCALE 1:20 DATE 1/1	
DAE045671		DAE045671	