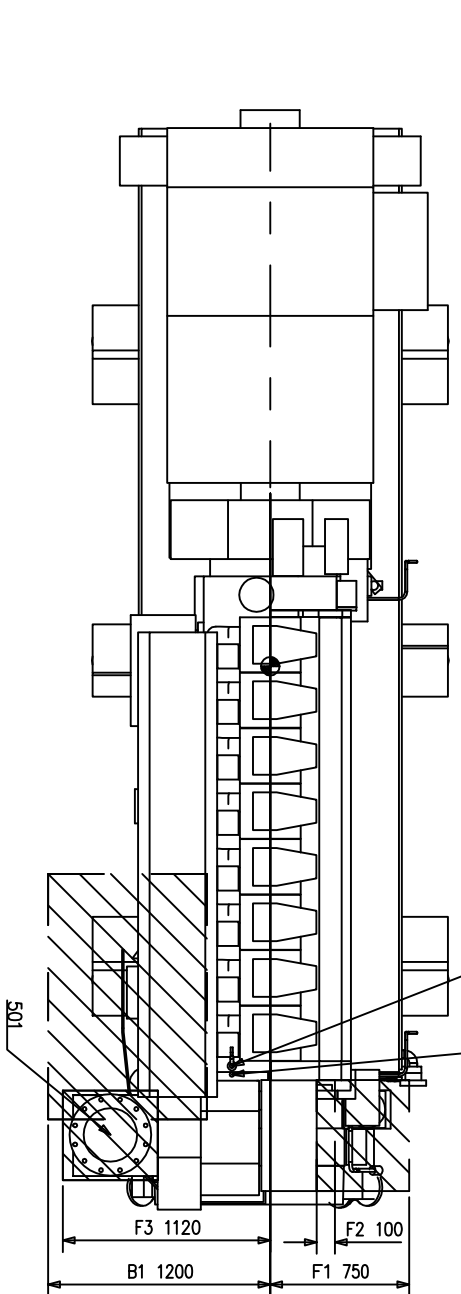
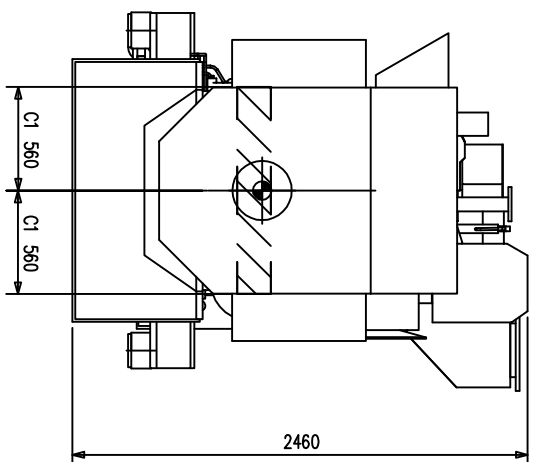
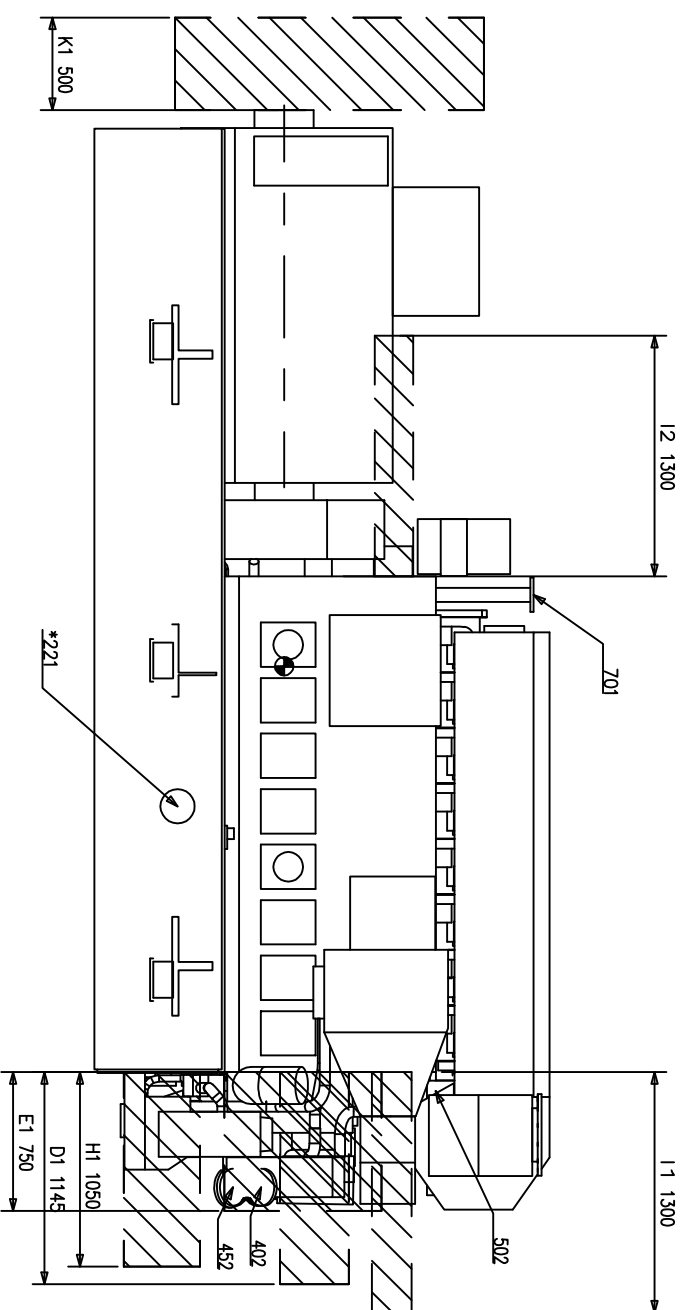


● CENTER OF GRAVITY
* = Optional

Paint/WEIGHTS (TOL. ±2.5%)
DIESEL ENGINE (DRY WEIGHT) WRL20 : 21400 Kg

Code	Explanation
101	FUEL INLET
102	FUEL OUTLET
103	LEAK FUEL DRAIN, CLEAN FUEL
104	LEAK FUEL DRANDIRTY FUEL
213	LUBE OIL FROM SEPARATOR AND FILLING
214	LUBE OIL TO SEPARATOR AND DRAIN
221	LUBE OIL OVERFLOW
301	STARTING AIR INLET
401	HT-WATER INLET
402	HT-WATER OUTLET
404	HT-WATER AIR VENT
406	WATER FROM PREHEATER TO HT-CIRCUIT
451	LT-WATER INLET
452	LT-WATER OUTLET
454	LT-WATER AIR VENT
501	EXHAUST GAS OUTLET
502	CLEANING WATER TO TURBINE
701	CRANKCASE AIR VENT



- A1. Height needed for overhauling piston and connecting rod: 1800mm
- A2. Height needed for transporting piston and connecting rod freely over adjacent cylinder head covers: 2300mm
- A3. Height needed for transporting piston and connecting rod freely over exhaust gas insulation box 4L:2230mm,6L:2300mm, 8L & 9L:2400mm.
- B1. Width needed for dismantling charge air cooler and air inlet box by using lifting tool:1200mm
- C1. Width needed for removing main bearing side 12. Camshaft overhaul distance(flywheel end): screw :.560mm
- D1. Distance needed to dismantle lube oil pump 1145mm
- E1. Distance needed to dismantle water box cover:750mm
- F1. The recommended axial clearance for dismantling and assembly of silencers:4L:590mm, 6L:650mm,8L,9L:750mm
- F2. Minimum axial clearance is 100mm
- F3. Recommended distance for dismantling the gas outlet elbow:4L:890mm, 6L:990mm, 8L,9L:1120mm.
- H1. Distance needed for dismantling lube plate cooler:1050mm
- I1. Camshaft overhaul distance(free end): 4L:700mm,6L:1000mm,8L, 9L:1300mm
1. Camshaft overhaul distance(flywheel end): 4L:700mm,6L:1000mm,8L, 9L:1300mm
12. Camshaft overhaul distance(flywheel end): 4L:700mm,6L:1000mm,8L, 9L:1300mm
- K1. Service space for generator: 500mm

Product WRL20 AUXPAC		Finland Oy Ship Power	
DATE	18.05.2007	SCALE	1:20
DESIGN	W-SP	SCALE	A1
UNIT	mm kg	SCALE	A1
DATE	18.05.2007	SCALE	1:20
DESIGN	W-SP	SCALE	A1
UNIT	mm kg	SCALE	A1
DIESEL ALTERNATOR SET		AUXPAC 1350WRL20-50-FENXI	
PART CLASS		DAE045667	